

SNOOP

OUTDOOR CANOPY SERIES

Integral Driver



Constant Current
Single LED module
driven by a single
LED driver



LED
Driver

A series of adjustable luminaires that can be installed on ceilings or walls to provide directional illumination. Incorporating ELR's signature modular concept design, LED modules are fully interchangeable with choices to flexibly illuminate designated areas and objects ideally for accent lighting applications.



Moulded
Teething Lock

Reduced Glare



Future proof with
upgradeable module

Accessory options

Fixture Features



IP66 IK08



Class 2

Module Colour Temperature Variation



ProART



ProART98



WARM DIM

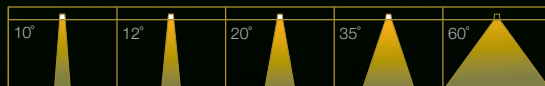


tuneWHITE



flexiK

Beam Angle



Driver Dimming Variation



(ND)



(PH)



(AN)

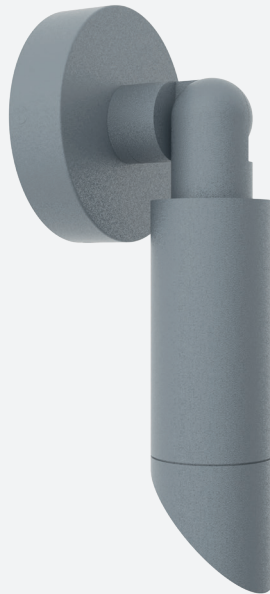


(DA)

SNOOP 3 CANOPY

IP 66 IK08

OUTDOOR CANOPY MOUNTED LUMINAIRE



TECHNOLOGY AND FEATURES



Advanced Thermal Protection System



Low Flicker, No Risk (IEEE 1789)



Converging Optical Lens Maximising LOR

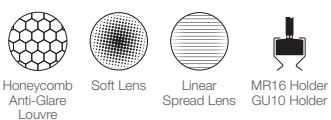
AVAILABLE OPTIONS

FIXTURE COLOUR OPTIONS

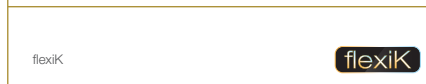
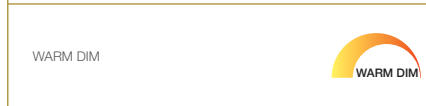
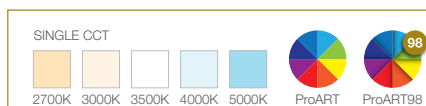
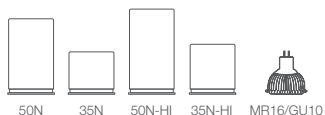
MATT GREY RAL7001 MATT BLACK RAL9011



ACCESSORIES



LED MODULE



***tuneWHITE and flexiK are recommended to be paired with Soft Lens for better colour mixing effect.*

	10°	20°	35°	60°
50N / 35N	✓	✓	✓	✓
50N-HI / 35N-HI	✓			
50N / 35N	✓	✓	✓	✓
50N		✓	✓	✓

DRIVER DIMMING





Class 2

SNOOP 3 CANOPY

IP 66 IK08

SPECIFICATIONS

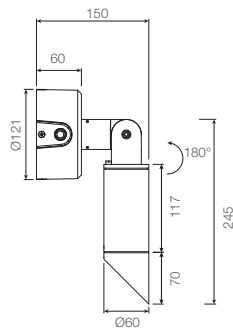
FIXTURE

Family Type	Snoop series
Fixture Colours	Matt grey, matt black
Fixture Materials	Aluminium
Accessories	Honeycomb anti-glare louvre, soft lens, linear spread lens
Ingress Protection	IP66
Safety Class	Class 2
Power Supply Cable	Supplied with 1m cable

LED MODULE & DRIVER

Compatible LED Modules	50 and 35 NEST series LED modules or MR16/GU10
Lifetime	Up to 50,000 hours L80 lamp life with LM80 tested LED chip packages
Beam Angles	10°, 20°, 35°, 60°
Colour Temperatures	2700K, 3000K, 3500K, 4000K, 5000K, Warm Dim, tuneWHITE, flexiK
CRI	High Efficiency (CRI~85), ProART (CRI~95), ProART98 (CRI~98)
Driver (Dimming)	Non-dim, phase (leading & trailing edge), 0-10V, DALI

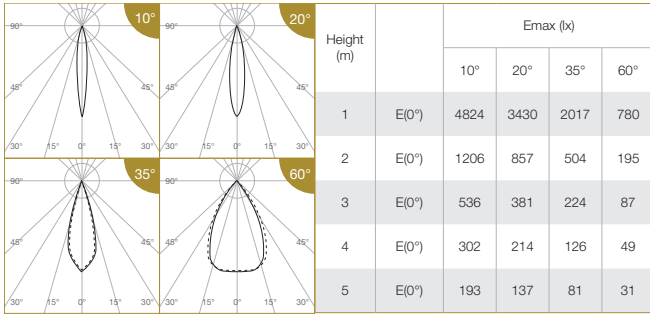
DIMENSIONS (MM)



SNOOP 3 CANOPY IP 66 IK08

PHOTOMETRICS

50 NEST



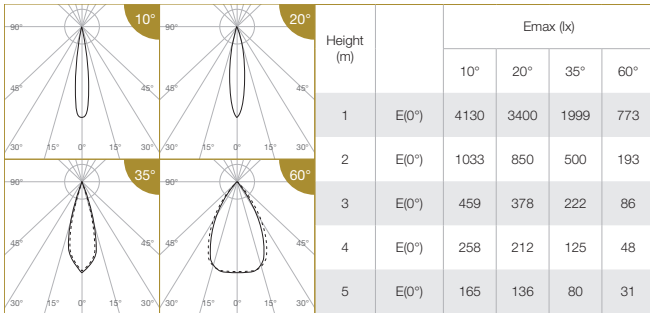
Correction Factor:
 50N (10°) - f = 1.00
 35N (10°) - f = 0.73
 50N (20°, 35°, 60°) - f = 1.00
 35N (20°, 35°, 60°) - f = 0.74

ELR LED Module				50N	35N	
LED Power				7.5W	5.5W	
System Power				10W	7.5W	
Luminous Flux (lm)	Single CCT (3000K)	Type	Beam Angle	CRI		
				High Efficiency Ra-85	ProART Ra-95	
		10°	High Efficiency Ra-85	630	462	
				ProART Ra-95	536	393
				ProART98 Ra-98	441	323
		20°	High Efficiency Ra-85	874	644	
				ProART Ra-95	743	547
				ProART98 Ra-98	612	451
		35°	High Efficiency Ra-85	884	651	
				ProART Ra-95	751	553
				ProART98 Ra-98	618	456
		60°	High Efficiency Ra-85	874	644	
ProART Ra-95	743			547		
		ProART98 Ra-98	612	451		

Data are based on 3000K (ProART CRI-95). Nominal data of 2700K and 3500K are shared with 3000K. Higher CCT of 4000K and 5000K will have a nominal data value of 5% higher than published. (f = 1.05) High Efficiency CRI-85 will have a nominal data value of 15% higher than published. (f = 1.17) ProART98 CRI-98 will have a nominal data value of 18% lower than published. (f = 0.82)

Nominal CRI-85, equals to Ra>80-87, R9>0
 Nominal CRI-95, equals to Ra>90-97, R9>50
 Nominal CRI-98, equals to Ra>97-99, R9>93

50 NEST WARM DIM



Correction Factor:
 50N WD - f = 1.00
 35N WD - f = 0.74

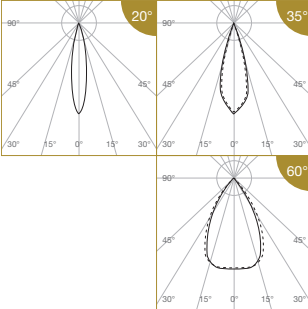
ELR LED Module				50N	35N
LED Power				7.5W	5.5W
System Power				10W	7.5W
Luminous Flux (lm)	Warm Dim (3100K)	Type	Beam Angle	CRI	
				ProART Ra-95	
		10°	ProART Ra-95	672	496
				736	543
				744	549
35°	ProART Ra-95	736	543		
		736	543		

Data are based on maximum output at 3100K.
 Nominal CRI-95, equals to Ra>90-97, R9>50

SNOOP 3 CANOPY IP 66 IK08

PHOTOMETRICS

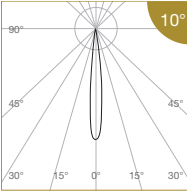
50 NEST tuneWHITE/flexiK



Height (m)	E(0°)	Emax (lx)			ELR LED Module			50N		
		20°	35°	60°	LED Power			7.5W		
					System Power			10W		
1	E(0°)	2550	1499	580	Luminous Flux (lm)	Type	Beam Angle	CRI	ProART Ra-95	
						tuneWHITE / flexiK (4000K / 6500K)	20°			552
							35°			558
2	E(0°)	637	375	145		60°	552			
3	E(0°)	283	167	64						
4	E(0°)	159	94	36						
5	E(0°)	102	60	23						

Data are based on maximum output at highest CCT (4000K / 6500K).
2700K will have a nominal data value of 10% lower than published. (f = 0.90)
1800K will have a nominal data value of 30% lower than published. (f = 0.70)
Nominal CRI-95, equals to Ra>90-97, R9>50

50 NEST HIGH INTENSITY

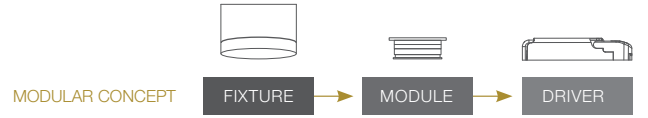


Height (m)	E(0°)	Emax (lx)		ELR LED Module			50N-HI	35N-HI			
		10°		LED Power			7.5W	5.5W			
				System Power			10W	7.5W			
1	E(0°)	10417	2604	1157	Luminous Flux (lm)	Type	Beam Angle	CRI	High Efficiency Ra-85		
						Single CCT (3000K)	10°			558	410
										ProART Ra-95	474
		ProART98 Ra-98	391	287							
2	E(0°)	2604									
3	E(0°)	1157									
4	E(0°)	651									
5	E(0°)	417									

Data are based on 3000K (ProART CRI-95). Nominal data of 2700K and 3500K are shared with 3000K.
Higher CCT of 4000K and 5000K will have a nominal data value of 5% higher than published. (f = 1.05)
High Efficiency CRI-85 will have a nominal data value of 15% higher than published. (f = 1.17)
ProART98 CRI-98 will have a nominal data value of 18% lower than published. (f = 0.82)
Nominal CRI-85, equals to Ra>80-87, R9>0
Nominal CRI-95, equals to Ra>90-97, R9>50
Nominal CRI-98, equals to Ra>97-99, R9>83

Correction Factor:
50N-HI - f = 1.00
35N-HI - f = 0.73

SNOOP 3 CANOPY 66 IK08



ORDERING MATRIX CHART

Fixture							
Type	Ingress Protection		Colour		Accessories		
SNOOP-3CN	IP66	IP66	GR	Matt Grey	N	None	
				MB		Matt Black	AGL
						SL	Soft Lens
						LSL	Linear Spread Lens
						MR16	MR16 Holder
						GU10	GU10 Holder

Single CCT LED Module								Driver									
LED Power		Beam Angle		Colour Temp		CRI		Dimming									
ELR50N	7.5W	10	10°	27	2700K	HE	Ra-85	ND	Non-Dim								
										ELR35N	5.5W	20	20°	30	3000K	PA	ProART
35	35°	35	3500K	PP	ProART98	AN	0-10V										
								60	60°								
ELR50N-HI	7.5W	NS	10°	27	2700K	HE	Ra-85										
								ELR35N-HI	5.5W	30	3000K	PA	ProART	PH	Phase		
35	3500K	PP	ProART98	AN	0-10V												
						40	4000K									DA	DALI
50	5000K																

Warm Dim LED Module								Driver	
LED Power		Beam Angle		Colour Temp		CRI		Dimming	
ELR50N	7.5W	10	10°	WD	Warm Dim	PA	ProART	PH	Phase
35	35°	DA	DALI						
				60	60°				

tuneWHITE LED Module								Driver	
LED Power		Beam Angle		Colour Temp		CRI		Dimming	
ELR50N	7.5W	20	20°	TW1831	tuneWHITE 1800K-3100K	PA	ProART	DA	DALI
			35°		tuneWHITE 1800K-4000K				
			60°		tuneWHITE 2700K-6500K				

flexiK LED Module								Driver			
LED Power		Beam Angle		Colour Temp		CRI		Dimming			
ELR50N	7.5W	20	20°	FK##	flexiK	PA	ProART	PH	Phase		
			35°							AN	0-10V
			60°								

denotes the first two digits of preferred CCT ranging from 1800K to 6500K by increment of 100K.

example: SNOOP-3CN,IP66,GR,AGL,ELR50N,35,27,PA,PH

*Custom RAL colour options available.